

# **FRANKCO**

## **INDUSTRIAL HOSE PUMP**



[www.frankcopump.com](http://www.frankcopump.com)

# HOSE PUMP

Solution for corrosive, abrasive, viscous with particle and shear sensitive product.

## Hose Pump

Frankco hose pump focuses on achieving full customer satisfaction at all times, offering the best product, high efficiency, high precision, support and service so that their experience is always good and with a view to new business opportunities.

## Applications

### Chemical

Corrosive acids and bases

### Water and Wastewater Treatment

Lime, kalic, sodium hypochlorite, ferric chloride and sludges

### Pulp and Paper

Dyes, sizing agents, retention aids and titanium dioxide

### Paint and pigments

Dispersion mill feed, pigment and latex transfer

### Textiles

Fibers, dyes and acids

### Construction

Cement, coatings, spray concrete, colorants and aggregate

### Printing and packaging

Varnishes, inks, coatings and adhesives

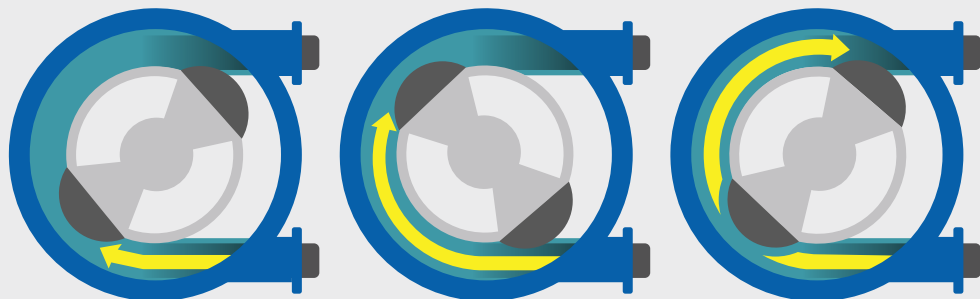
### Food and beverage

Wine, brewery, dairy, bakery, flavorings and additives

### Mining

Tailing slurries, sludges and reagents  
Ceramics and glass fine china, brick and tiles

## Working Principle



### Engineered for Simplicity

The pumping process operates by alternately compressing and releasing a precisely machined hose between the pump housing and compression shoes. This action pushes fluid forward while drawing more in behind, ensuring 100% compression for accurate metering and pressure control. With no seals, seats, or valves, the pump easily handles abrasive slurries, and fluid contact is limited to the inner hose wall, making it perfect for aggressive chemical applications.

## Advantages

- Self-priming with superior suction lift 9.5 meters.
- Damage free continuous dry running.
- Suitable for corrosive, abrasive, viscous fluids and shear sensitive products.
- Ease installation, operation and maintenance.
- $\pm 1\%$  metering accuracy.
- No seal or valve design to lower total cost of ownership.

**FRANKCO**

## Product Parameters

Model	Rated Flow	Max Pressure	Rated Speed	Power	Weight
FC25	792 L/H	16 bar	44 rpm	1.1 kW	108 kg
FC32	1,650 L/H	16 bar	44 rpm	1.5 kW	122 kg
FC40	3,280 L/H	16 bar	41 rpm	2.2 kW	194 kg
FC50	7,175 L/H	16 bar	41 rpm	4 kW	282 kg
FC65	18,000 L/H	16 bar	45 rpm	5.5 kW	550 kg
FC80	24,500 L/H	16 bar	35 rpm	11 kW	900 kg
FC100	42,000 L/H	16 bar	35 rpm	15 kW	1,300 kg
FC125	66,000 L/H	16 bar	33 rpm	22 kW	2,400 kg

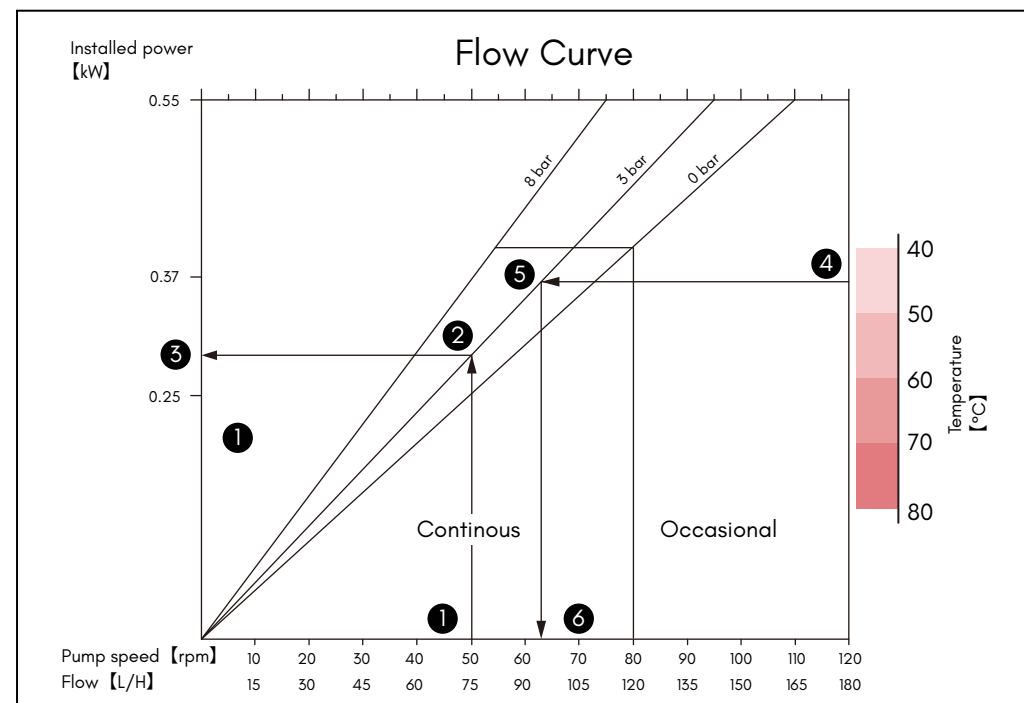


# INDUSTRIAL HOSE PUMP

Solution for corrosive, abrasive, viscous with particle and shear sensitive product.

## Identification Code

FC	C	025	NR	EM	1	
						VFD 1 : Motor include VFD 0 : Motor not include VFD
						Drive Type EM : Electric Motor XM : Explosion-Proof Motor HM : Hydraulic Motor PM : Pneumatic Motor
						Hose Type NR : NR EP : EPDM NB : NBR CS : CSM FR : F-NR FB : F-NBR
						Model
						Pump Materials P : Plastic S : Stainless Steel C : Cast Iron A : Aluminum
						Range Type



## How to use the pump curve

- Start by selecting the flow rate you need; this will correspond to the pump speed.
- Identify the required discharge pressure for your application.
- Move horizontally to the left from your flow rate to determine the motor power needed.
- Locate the maximum operating temperature the pump can handle for your specific conditions.
- Ensure the calculated discharge pressure aligns by moving horizontally on the curve.
- Move vertically down from your selected flow rate to verify the maximum recommended pump speed.

# FC 25

## Pump Material:

Aluminum alloy, ABS,  
Stainless Steel, Iron.

## Hose Material:

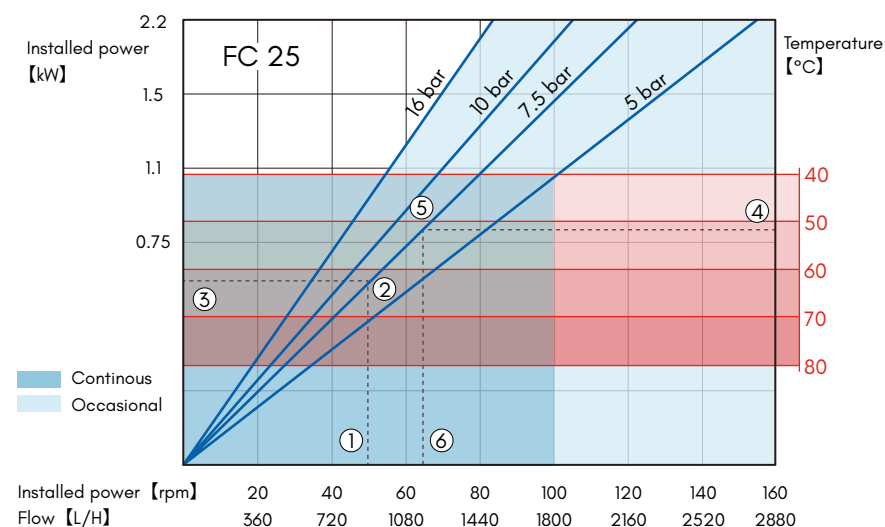
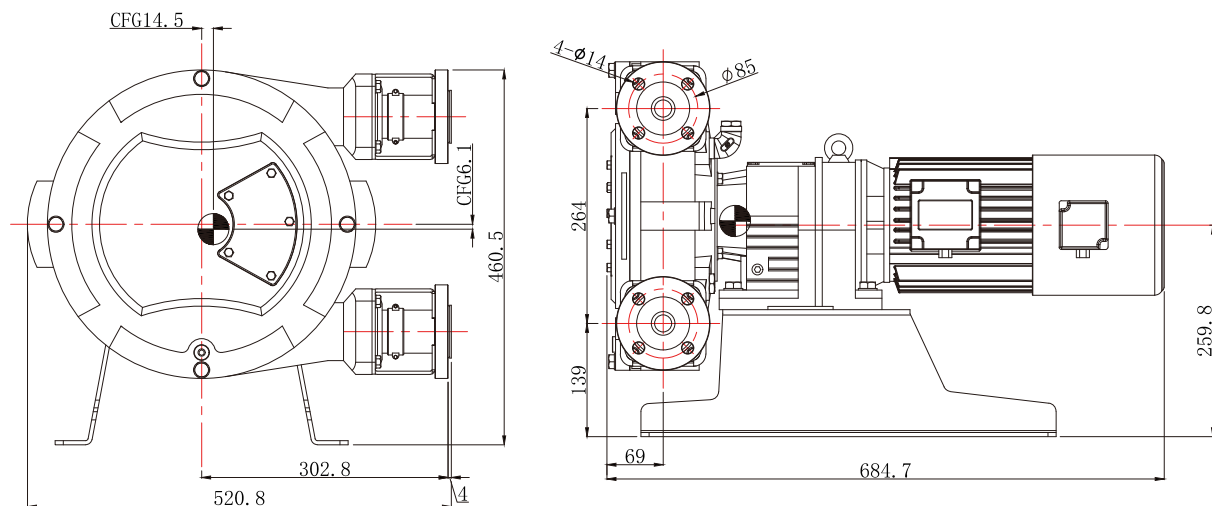
- NR      • EPDM
- NBR    • CSM
- F-NR   • F-NBR

## Other Parameters:

Weight: 108 kg  
Lubricating oil dosage: 2L

# Technical Parameters

Self-Priming Height [m]	9.5(water)
Maximum Particle Diameter [mm]	4.2
Cliber Size [inch]	1"
Motor Power [kW]	1.1/1.5
Rated Voltage [V]	220/380
Rated Speed [rpm]	44
Capacity [L]	0.3
Rated Flow [L/H]	792
Maximum Flow [L/H]	2880
Max Pressure [bar]	16
Maximum Head [m]	160



Note: All dimensions are in millimeters (mm);  
The length of the motor will vary with different brands and types, please consult you local dealer for details.

Note: see P3 for the usage of graph.

# FC 32

## Pump Material:

Cast Iron  
Contact Material: ABS,  
Stainless Steel, Titanium.

## Hose Material:

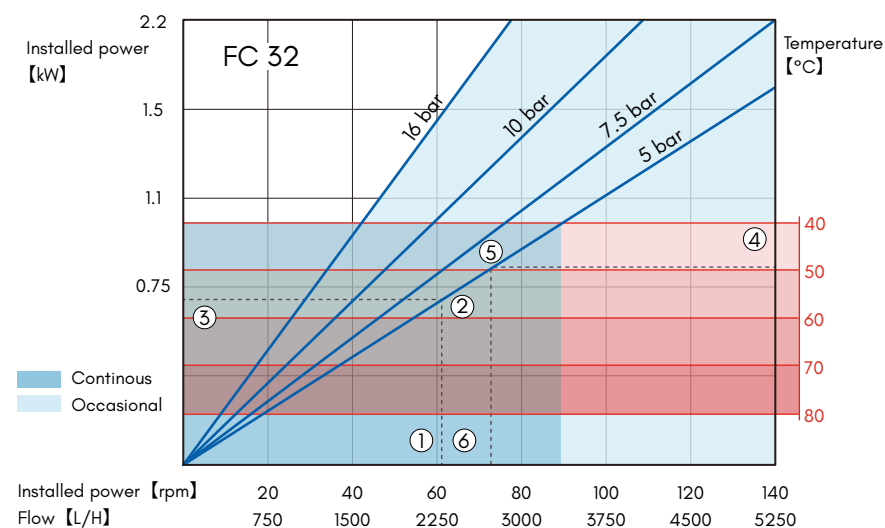
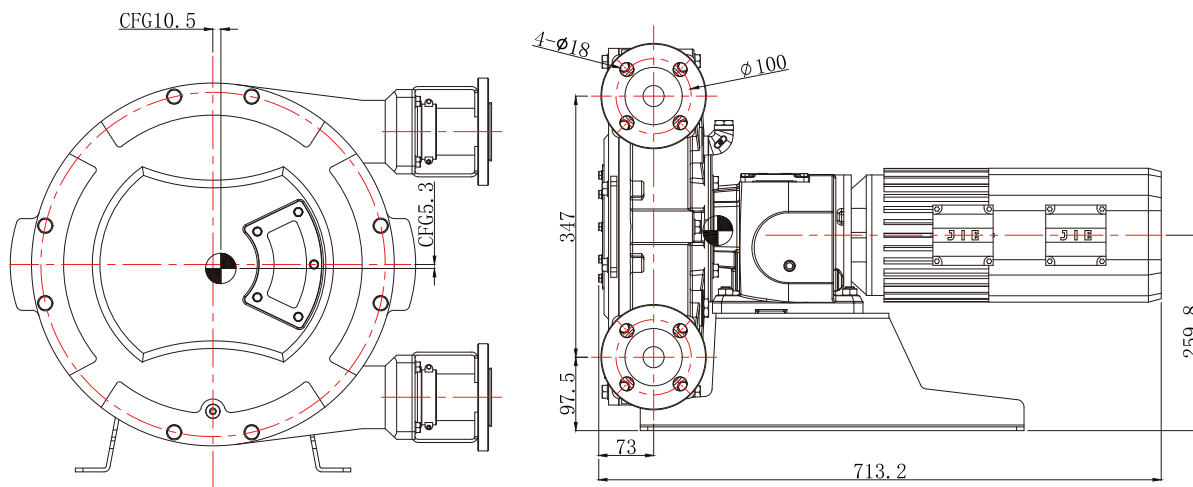
- NR • EPDM
- NBR • CSM
- F-NR • F-NBR

## Other Parameters:

Weight: 122 kg  
Lubricating oil dosage: 3L

# Technical Parameters

Self-Priming Height [m]	9.5(water)
Maximum Particle Diameter [mm]	5.4
Cliber Size [inch]	1-1/4"
Motor Power [kW]	1.5
Rated Voltage [V]	220/380
Rated Speed [rpm]	44
Capacity [L]	0.63
Rated Flow [L/H]	1650
Maximum Flow [L/H]	5250
Max Pressure [bar]	16
Maximum Head [m]	160



Note: All dimensions are in millimeters (mm);  
The length of the motor will vary with different brands and types, please consult you local dealer for details.

Note: see P3 for the usage of graph.





## FC 40

### Pump Material:

Cast Iron  
Contact Material: ABS,  
Stainless Steel, Titanium.

### Hose Material:

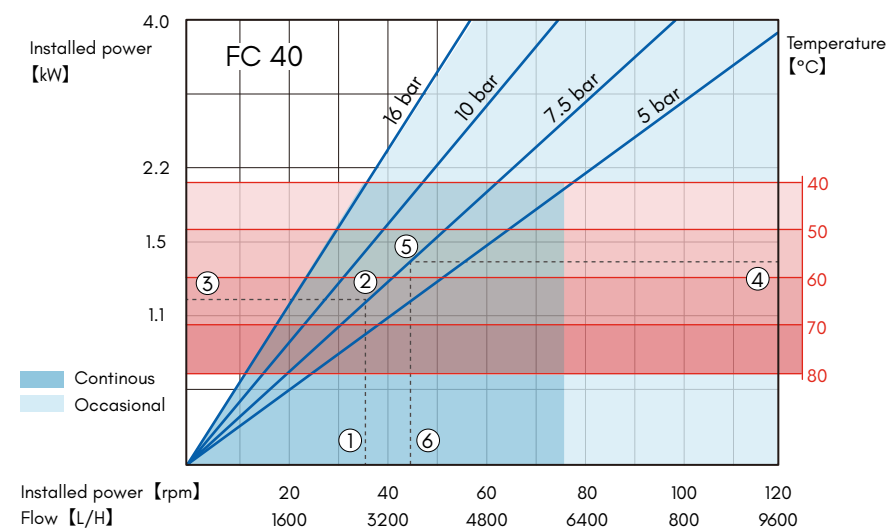
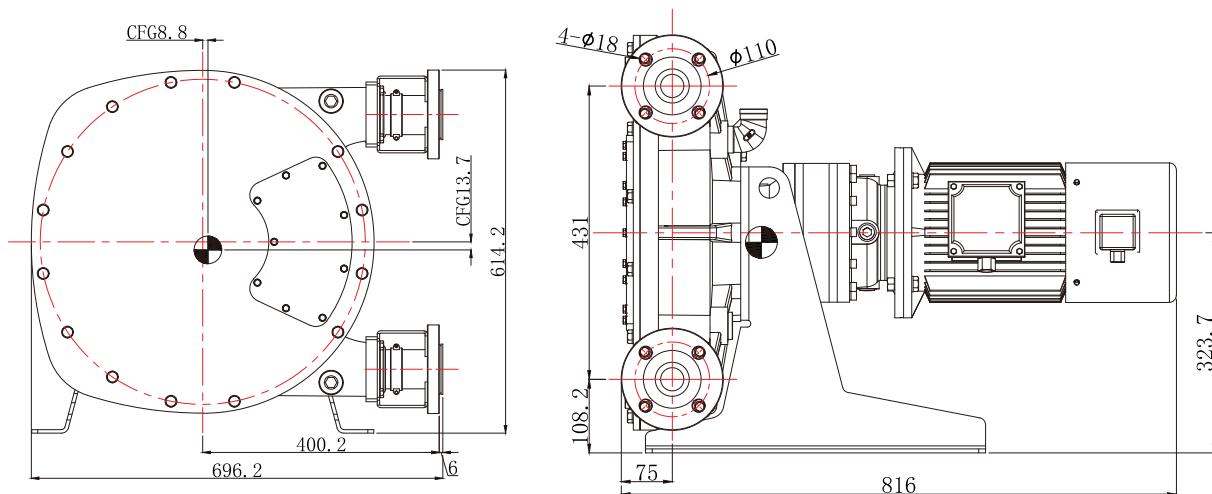
- NR    • EPDM
- NBR   • CSM
- F-NR   • F-NBR

### Other Parameters:

Weight: 194 kg  
Lubricating oil dosage: 5L

## Technical Parameters

Self-Priming Height [m]	9.5(water)
Maximum Particle Diameter [mm]	6.7
Cliber Size [inch]	1-1/2"
Motor Power [kW]	2.2/4
Rated Voltage [V]	220/380
Rated Speed [rpm]	41
Capacity [L]	1.3
Rated Flow [L/H]	3280
Maximum Flow [L/H]	9600
Max Pressure [bar]	16
Maximum Head [m]	160



Note: All dimensions are in millimeters (mm);  
The length of the motor will vary with different brands and types, please consult you local dealer for details.

Note: see P3 for the usage of graph.

# FC 50

## Pump Material:

Cast Iron  
Contact Material: ABS,  
Stainless Steel, Titanium.

## Hose Material:

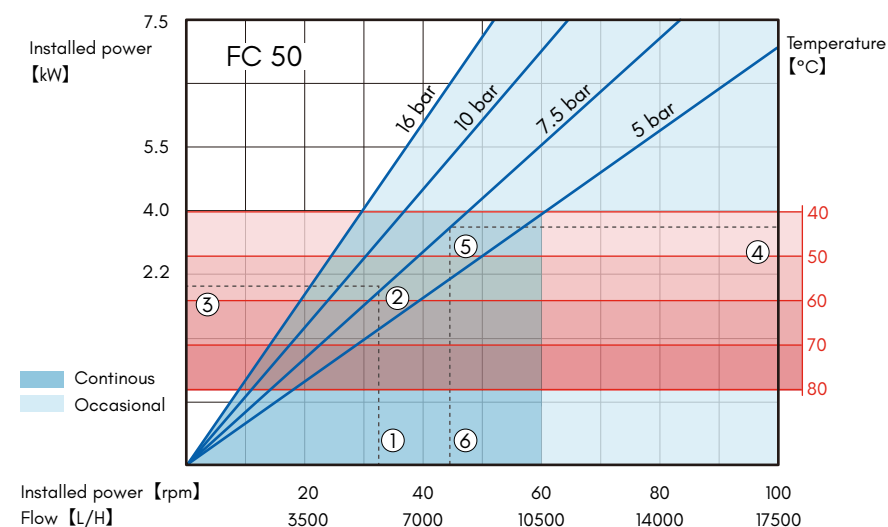
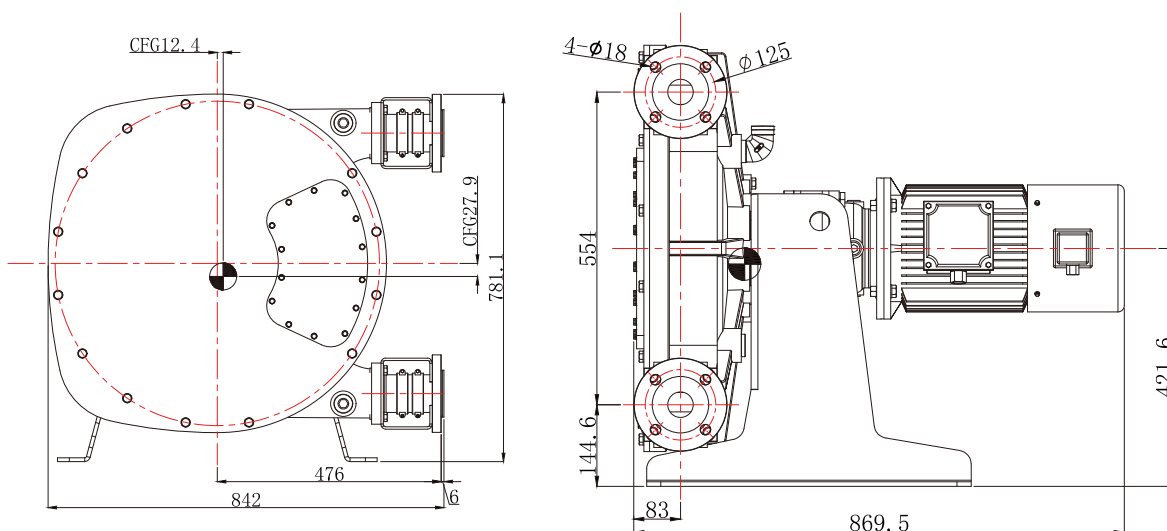
- NR • EPDM
- NBR • CSM
- F-NR • F-NBR

## Other Parameters:

Weight: 282 kg  
Lubricating oil dosage: 10L

# Technical Parameters

Self-Priming Height [m]	9.5(water)
Maximum Particle Diameter [mm]	8.3
Cliber Size [inch]	2"
Motor Power [kW]	4/5.5
Rated Voltage [V]	220/380
Rated Speed [rpm]	41
Capacity [L]	2.9
Rated Flow [L/H]	7175
Maximum Flow [L/H]	17500
Max Pressure [bar]	16
Maximum Head [m]	160



Note: All dimensions are in millimeters (mm);  
The length of the motor will vary with different brands and types, please consult you local dealer for details.

Note: see P3 for the usage of graph.





## FC 65

### Pump Material:

Cast Iron  
Contact Material: ABS,  
Stainless Steel, Titanium.

### Hose Material:

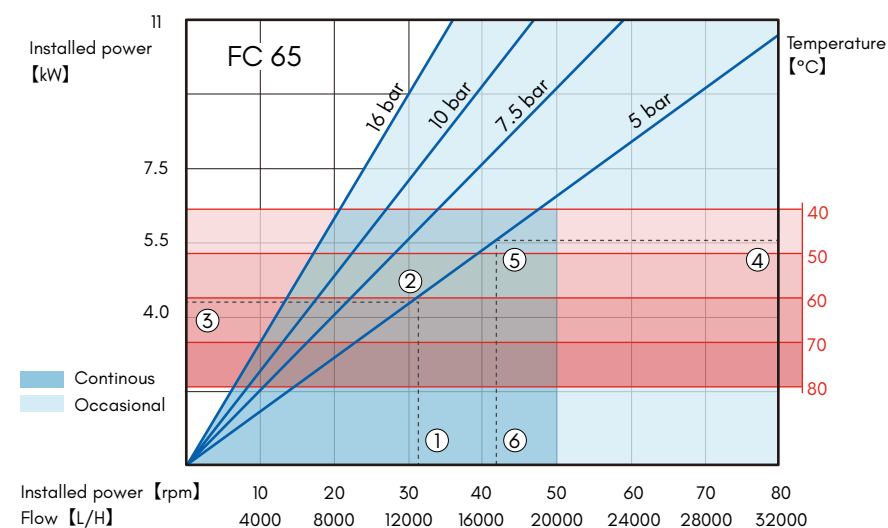
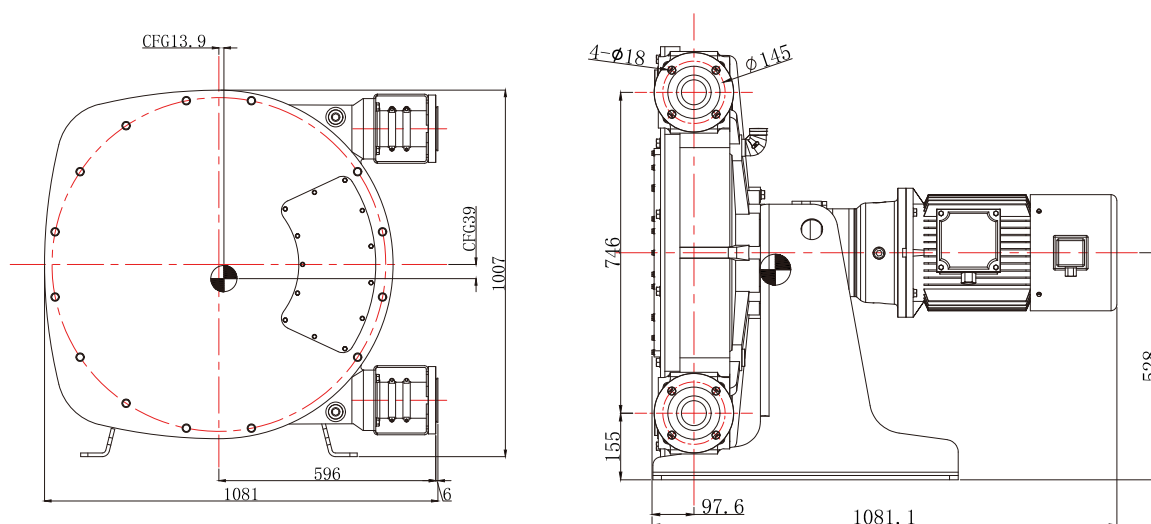
- NR      • EPDM
- NBR    • CSM
- F-NR   • F-NBR

### Other Parameters:

Weight: 550 kg  
Lubricating oil dosage: 20L

## Technical Parameters

Self-Priming Height [m]	9.5(water)
Maximum Particle Diameter [mm]	10.8
Cliber Size [inch]	2-1/2"
Motor Power [kW]	5.5/7.5
Rated Voltage [V]	220/380
Rated Speed [rpm]	45
Capacity [L]	6.7
Rated Flow [L/H]	18000
Maximum Flow [L/H]	32000
Max Pressure [bar]	16
Maximum Head [m]	160



Note: All dimensions are in millimeters (mm);  
The length of the motor will vary with different brands and types, please consult you local dealer for details.

Note: see P3 for the usage of graph.



## FC 80

### Pump Material:

Cast Iron  
Contact Material: ABS,  
Stainless Steel, Titanium.

### Hose Material:

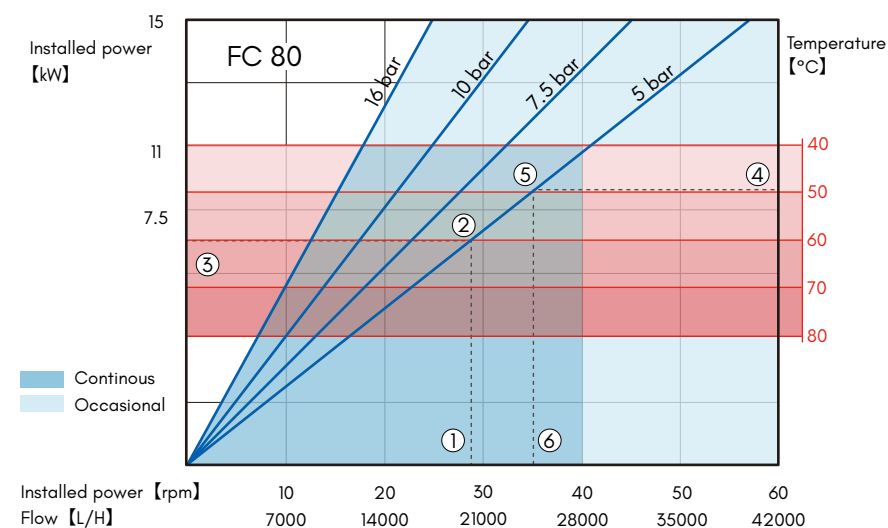
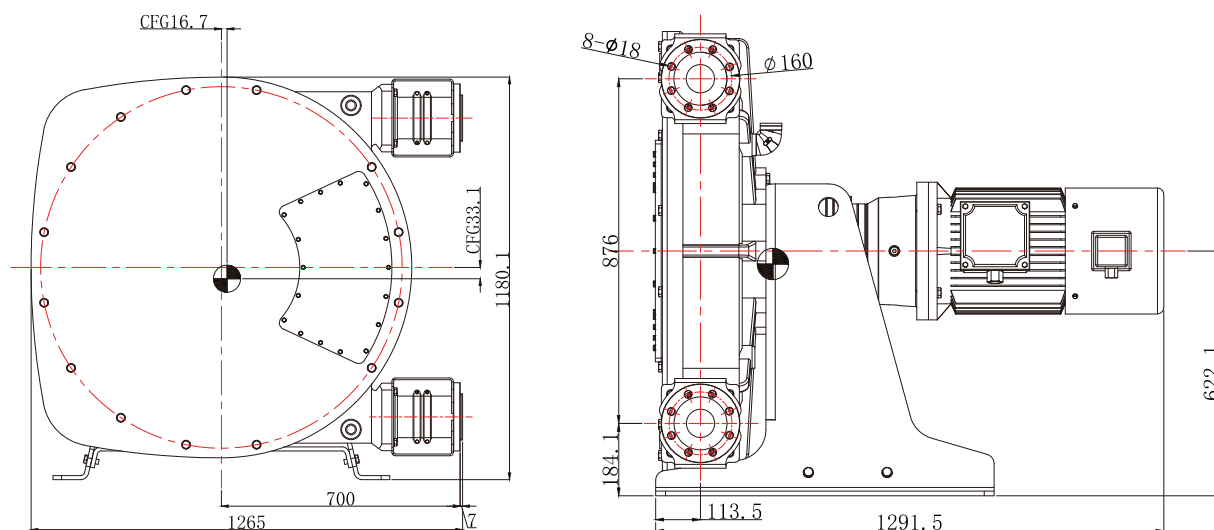
- NR      • EPDM
- NBR    • CSM
- F-NR   • F-NBR

### Other Parameters:

Weight: 900 kg  
Lubricating oil dosage: 30L

## Technical Parameters

Self-Priming Height [m]	9.5(water)
Maximum Particle Diameter [mm]	13.3
Cliber Size [inch]	3"
Motor Power [kW]	7.5/11
Rated Voltage [V]	220/380
Rated Speed [rpm]	35
Capacity [L]	11.7
Rated Flow [L/H]	24500
Maximum Flow [L/H]	42000
Max Pressure [bar]	16
Maximum Head [m]	160



Note: All dimensions are in millimeters (mm);  
The length of the motor will vary with different brands and types, please consult you local dealer for details.

Note: see P3 for the usage of graph.



## FC 100

### Pump Material:

Cast Iron  
Contact Material: ABS,  
Stainless Steel, Titanium.

### Hose Material:

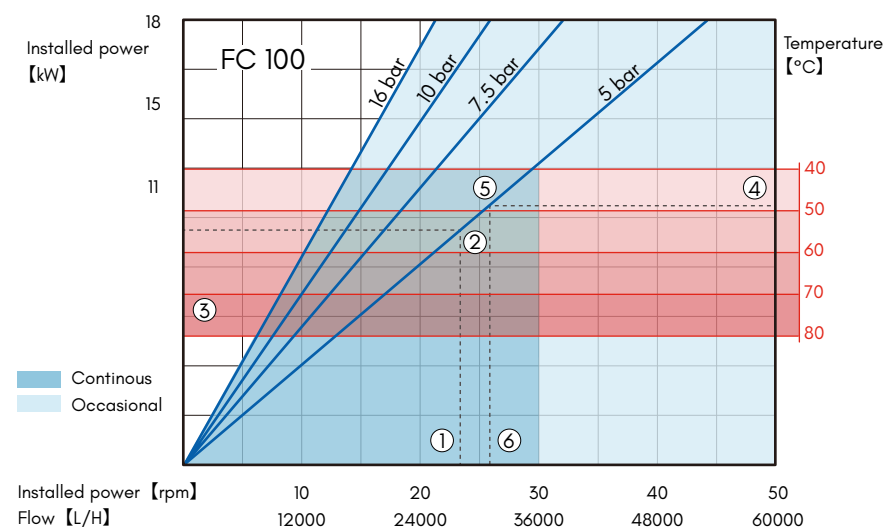
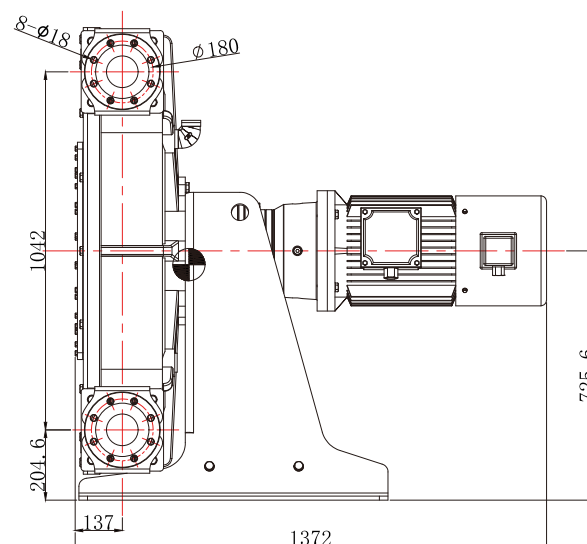
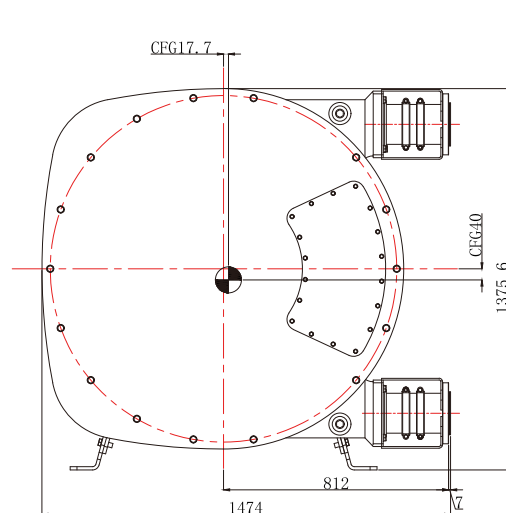
- NR      • EPDM
- NBR    • CSM
- F-NR   • F-NBR

### Other Parameters:

Weight: 14000 kg  
Lubricating oil dosage: 40L

## Technical Parameters

Self-Priming Height [m]	9.5(water)
Maximum Particle Diameter [mm]	1.5
Cliber Size [inch]	4"
Motor Power [kW]	11/15
Rated Voltage [V]	220/380
Rated Speed [rpm]	35
Capacity [L]	20
Rated Flow [L/H]	42000
Maximum Flow [L/H]	60000
Max Pressure [bar]	16
Maximum Head [m]	160



Note: All dimensions are in millimeters (mm);  
The length of the motor will vary with different brands and types, please consult you local dealer for details.

Note: see P3 for the usage of graph.

# FC 125

## Pump Material:

Cast Iron  
Contact Material: ABS,  
Stainless Steel, Titanium.

## Hose Material:

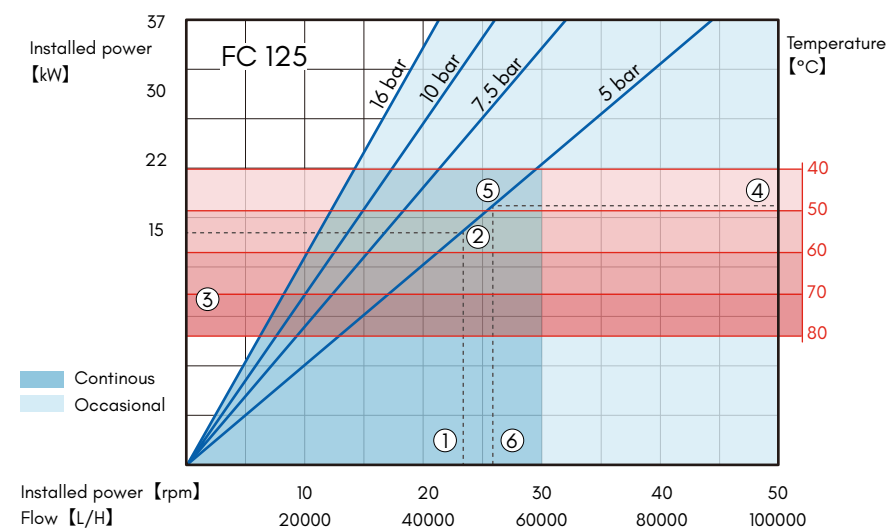
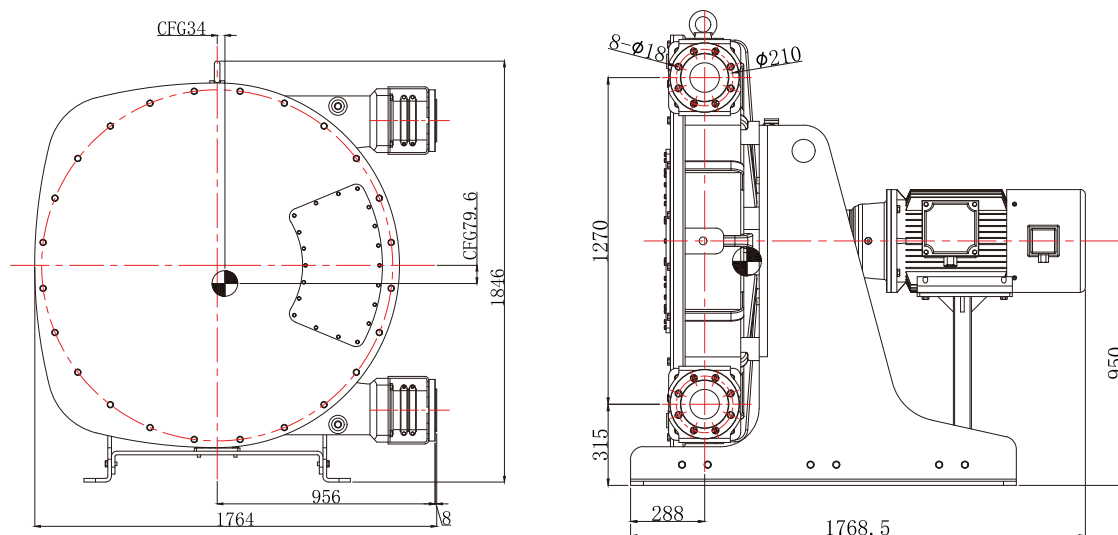
- NR • EPDM
- NBR • CSM
- F-NR • F-NBR

## Other Parameters:

Weight: 2400 kg  
Lubricating oil dosage: 60L

# Technical Parameters

Self-Priming Height [m]	9.5(water)
Maximum Particle Diameter [mm]	21
Cliber Size [inch]	5"
Motor Power [kW]	22
Rated Voltage [V]	220/380
Rated Speed [rpm]	33
Capacity [L]	33.3
Rated Flow [L/H]	66000
Maximum Flow [L/H]	100000
Max Pressure [bar]	16
Maximum Head [m]	160



Note: All dimensions are in millimeters (mm);  
The length of the motor will vary with different brands and types, please consult you local dealer for details.

Note: see P3 for the usage of graph.

# HOSE TYPE

Choose the right hose for your application.

## Features Temperature



### NR

- Natural Rubber
- Outstanding abrasion resistance.
- Generally resistant to diluted acids and alcohols.

Fluid Temp.  
-20-80 (°C)



### EPDM

- Excellent chemical resistance, especially to ketones, alcohols and concentrated acids.

Fluid Temp.  
-20~100 (°C)



### NBR

- Resistant to oils, greases, alkalis and detergents.

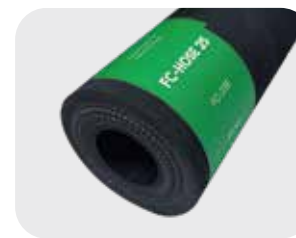
Fluid Temp.  
-20-80 (°C)



### CSM

- Outstanding chemical resistance to highly concentrated acids and bases.

Fluid Temp.  
-20-85 (°C)



### F-NR

- White inner surface, easy to eat Physical contact applies to all kinds of food Products, including dairy products.

Fluid Temp.  
-20-80 (°C)



### F-NBR

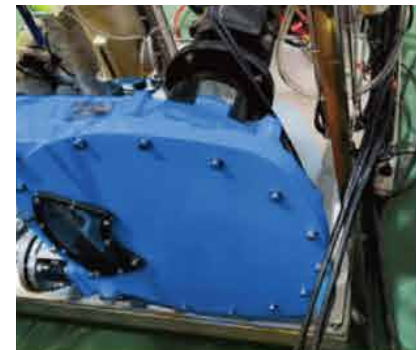
- White inner surface, easy to eat Physical contact applies to all kinds of food Products, including fatty foods.

Fluid Temp.  
-20~80 (°C)



# APPLICATION CASE

Trust FRANKCO for superior performance and lasting quality.







**" ENGINEERED FOR EFFICIENCY,  
BUILT FOR RELIABILITY. "**

***FRANKCO***

All Rights Reserved.

In view of continuous improvement, product specifications will be changed without prior notice.  
The right of final interpretation belongs to the company.

---

[www.frankcopump.com](http://www.frankcopump.com)

